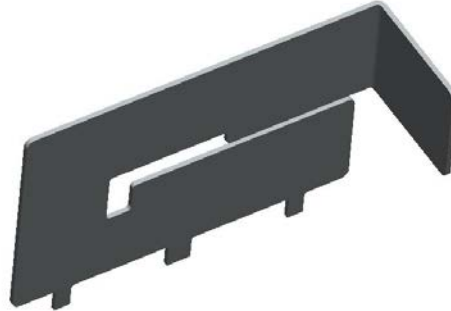


WPANT10071

900 MHz ISM band Stamped Metal Embedded Antenna



Note: 3D Model shown.

Application

An ideal choice for devices where circuit board real estate is at premium and low cost is a priority.

We can assist your engineers to optimize mounting positions for these antennas in your specific application and can further assist to troubleshoot system integration issues such as TRP/TIS and FCC requirements. We specialize in developing customized Antenna solutions. Please contact sales@worldproducts.com with your specific application requirements.

Electrical Properties

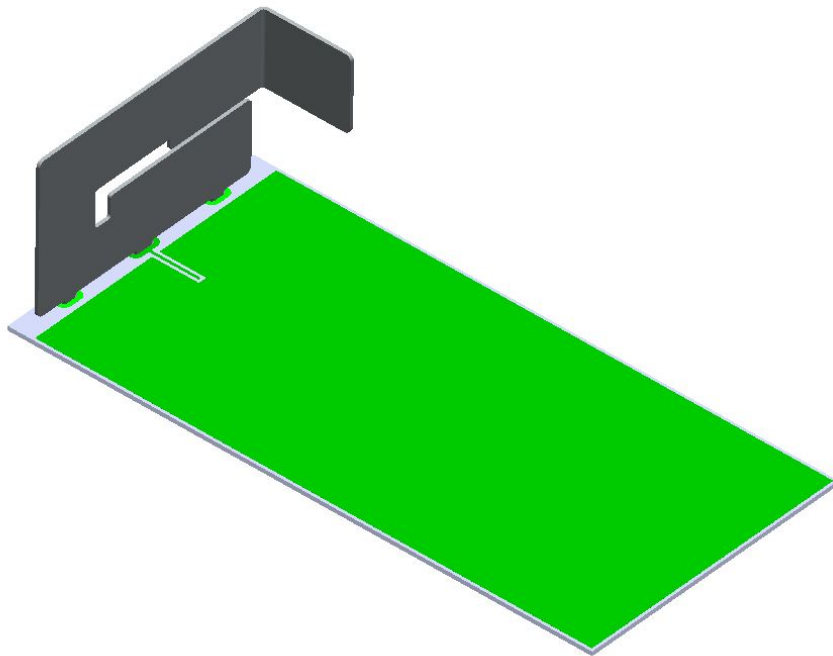
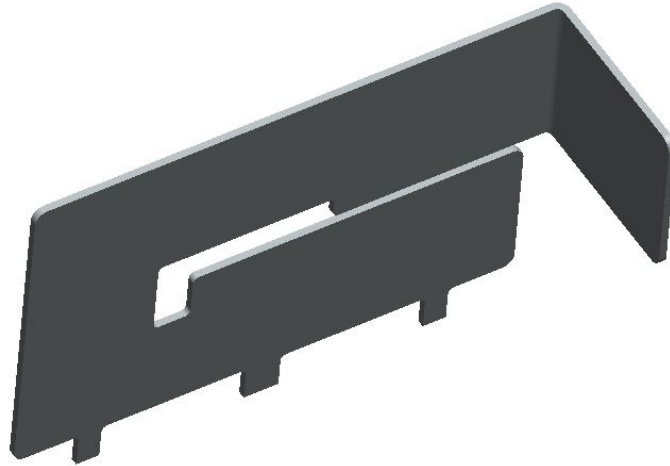
Operating Frequency	860 – 960 MHz
Approximate Antenna Impedance [Ω]*	50 Ω
VSWR (Typical)*	< 2:1
Peak Gain [dBi] (Typical)*	2 dBi
Efficiency [%] (Typical)*	70%
Polarization	Linear
Pattern	Omni-directional

*Note: These performance metrics were recorded with the antenna installed on an eval board.

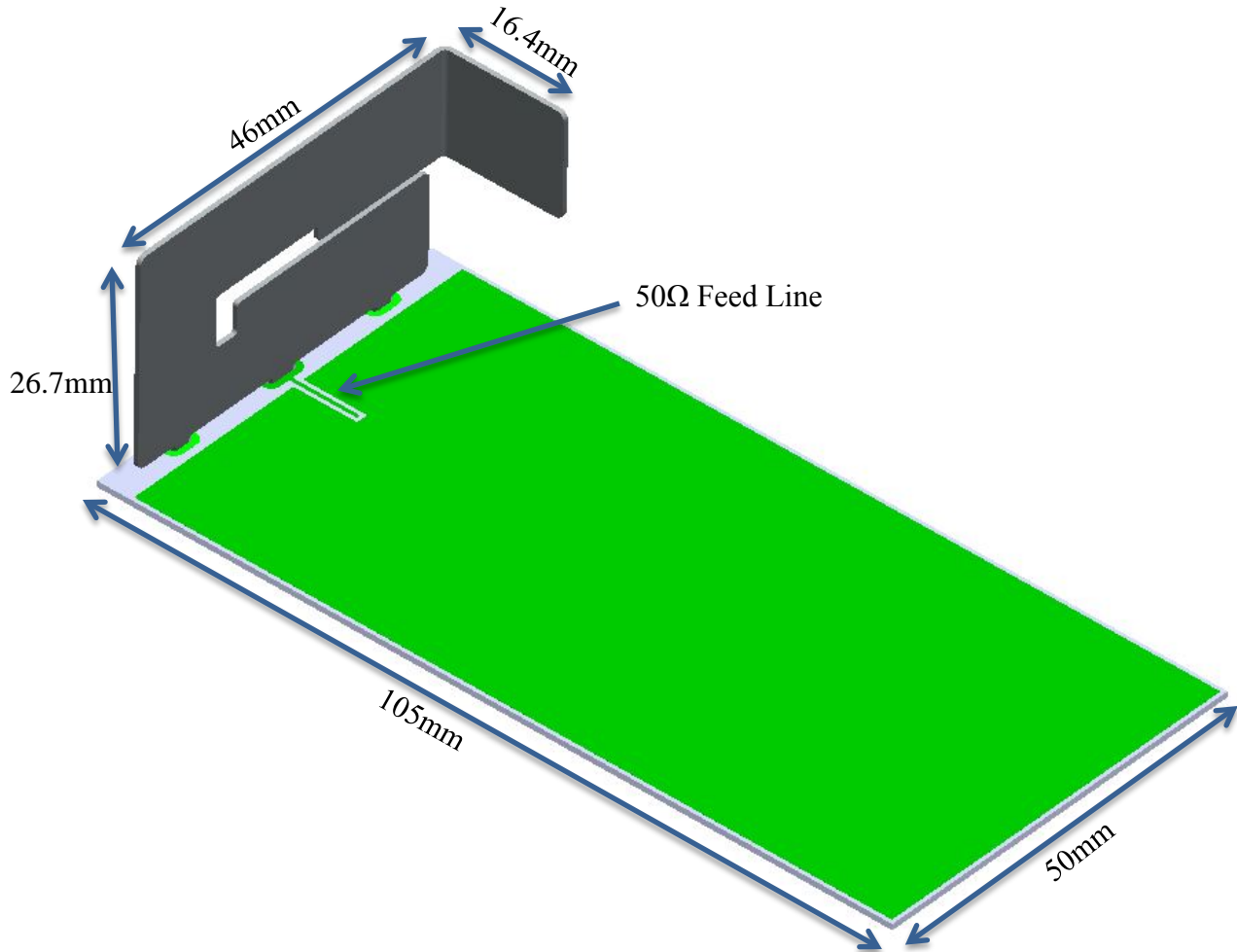
Mechanical / Environmental Properties

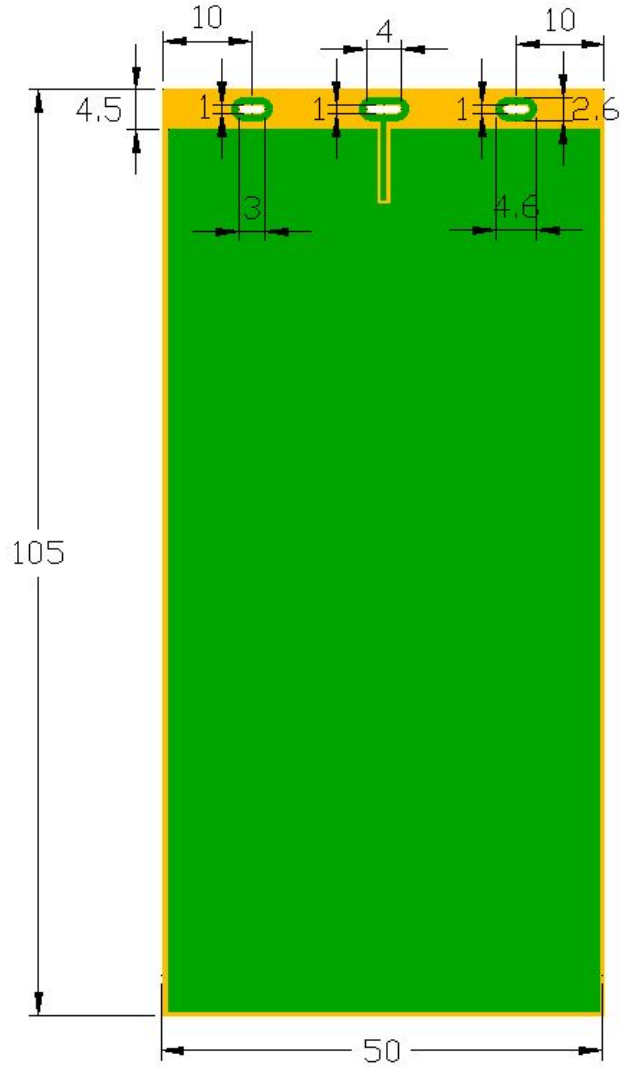
Antenna Dimensions	1.05" Height x 1.8" Length x 0.65" Width (26.7mm X 46mm X 16.4mm)
Antenna Color	Metallic Silver
Operating / Storage Temperature	-40°C to +300°C
Environmental	Meets standards for UL 94V-0
Hazardous Materials	RoHS Compliant

Pictures (3D Model)



Board Layout and Dimensions





Board Outline

Top Copper

TOP LAYER

Note: All units in millimeters (mm)



Board Outline
Bottom Copper

BOTTOM LAYER